

### ICON RECOGNITION

|  |                           |  |             |
|--|---------------------------|--|-------------|
|  | Thruster                  |  | Reactor     |
|  | C & C                     |  | Jump Engine |
|  | Sensors                   |  | Engine      |
|  | Med Pulse Cannon          |  | Interceptor |
|  | Heavy Phased Pulse Cannon |  | Hangar      |

Version 1: 2E/SW

Name: \_\_\_\_\_

Counter: \_\_\_\_\_



# Cadaver Destroyer (GAMMA)

### SPECS

Class: Capital Ship  
 In Service: 2269  
 Point Value: 2000  
 Ramming Factor: 400  
 Jump Delay: 18

### MANEUVERING

Turn Cost: 1/2 Speed  
 Turn Delay: 1/2 Speed  
 Accel/Decel Cost: 3 Thrust  
 Pivot Cost: 2+2 Thrust  
 Roll Cost: 4+4 Thrust

### COMBAT STATS

Fwd/Aft Defense: 15 (11)  
 Stb/Port Defense: 17 (13)  
 Engine Efficiency: 4/1  
 Extra Power: +0  
 Initiative Bonus: +2

### WEAPON DATA

**Light Molecular Slicer Beam**  
 Class: Molecular  
 Mode: Raking  
 Dmg, 1 Turn: 4d10+4  
 Dmg, 2 Turns: 6d10+6  
 Dmg, 3 Turns: 8d10+8  
 Range Penalty: -1 per 3 hexes  
 Fire Control: +6/+4/+2  
 Intercept Rating: n/a  
 Rate of Fire: 1 per turn  
*Special: Ignores armor. Can be divided into multiple attacks on different targets. Non-interceptable.*

**Heavy Phasing Pulse Cannon**  
 Class: Molecular  
 Mode: Pulse  
 Damage: 18 1d5 Times  
 Maximum Pulses: 6  
 Grouping Range: +1 per 3  
 Range Penalty: -1 per 2 hexes  
 Fire Control: +6/+4/+2  
 Intercept Rating: -2  
 Rate of Fire: 1 per 3 turns

**Interceptor Mk-II**  
 Intercept Rating: -4  
 Rate of Fire: 1 per turn  
**OFFENSIVE MODE:**  
 Class: Particle  
 Mode: Standard  
 Damage: 1d10+8  
 Fire Control: -/+4/+8  
 Range Penalty: -2 per hex

| Speed      | 1 | 2 | 3 | 4 | 5 | 6 | 7 | 8 | 9 | 10 | 11 | 12 |
|------------|---|---|---|---|---|---|---|---|---|----|----|----|
| Turn Cost  | 1 | 1 | 2 | 2 | 3 | 3 | 4 | 4 | 5 | 5  | 6  | 6  |
| Turn Delay | 1 | 1 | 2 | 2 | 3 | 3 | 4 | 4 | 5 | 5  | 6  | 6  |

### HANGAR

2 Shuttles Thrust: 3  
 Armor: 1 Defense: B/10

### FORWARD HITS

1-4: Retro Thrust  
 5-8: Med. Pulse  
 9-10: Heavy Cannon  
 11-12: Interceptor  
 13-18: Forward Struct  
 19-20: PRIMARY Hit

### SENSOR DATA

Defensive EW

|           |  |  |
|-----------|--|--|
| Target #1 |  |  |
| Target #2 |  |  |
| Target #3 |  |  |
| Target #4 |  |  |
| Target #5 |  |  |
| Target #6 |  |  |

### SIDE HITS

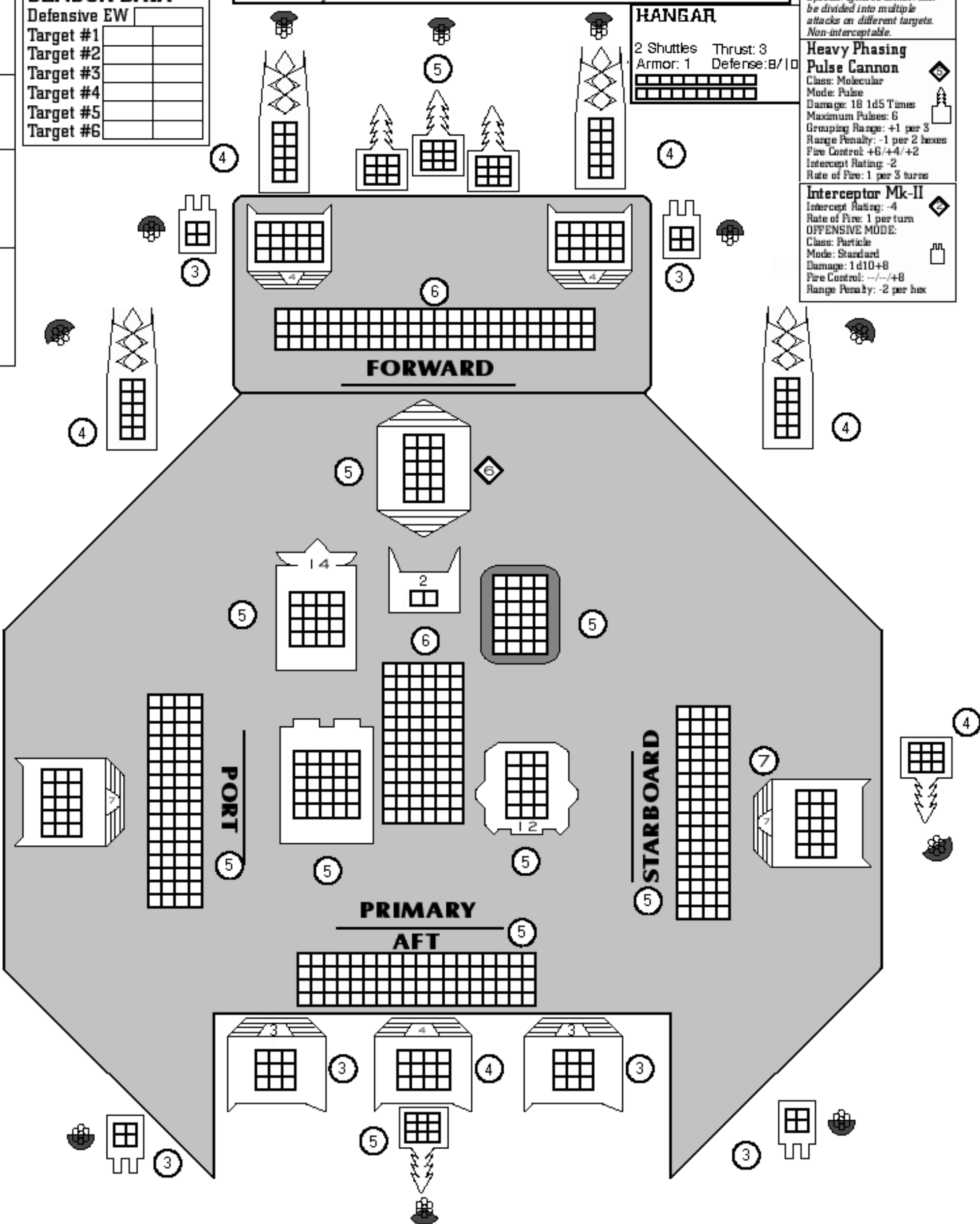
1-6: Port/Stb Thrust  
 7-8: Heavy Cannon  
 9-18: Port/Stb Struct  
 19-20: PRIMARY Hit

### AFT HITS

1-8: Main Thrust  
 9-10: Heavy Cannon  
 11-12: Interceptor  
 13-18: Aft Struct  
 19-20: PRIMARY Hit

### PRIMARY HITS

1-9: Primary Struct  
 10-12: Hangar  
 13-14: Sensors  
 15-16: Engine  
 17: Jump Drive  
 18-19: Reactor  
 20: C & C



BY:  
 Thurston  
 Hillman